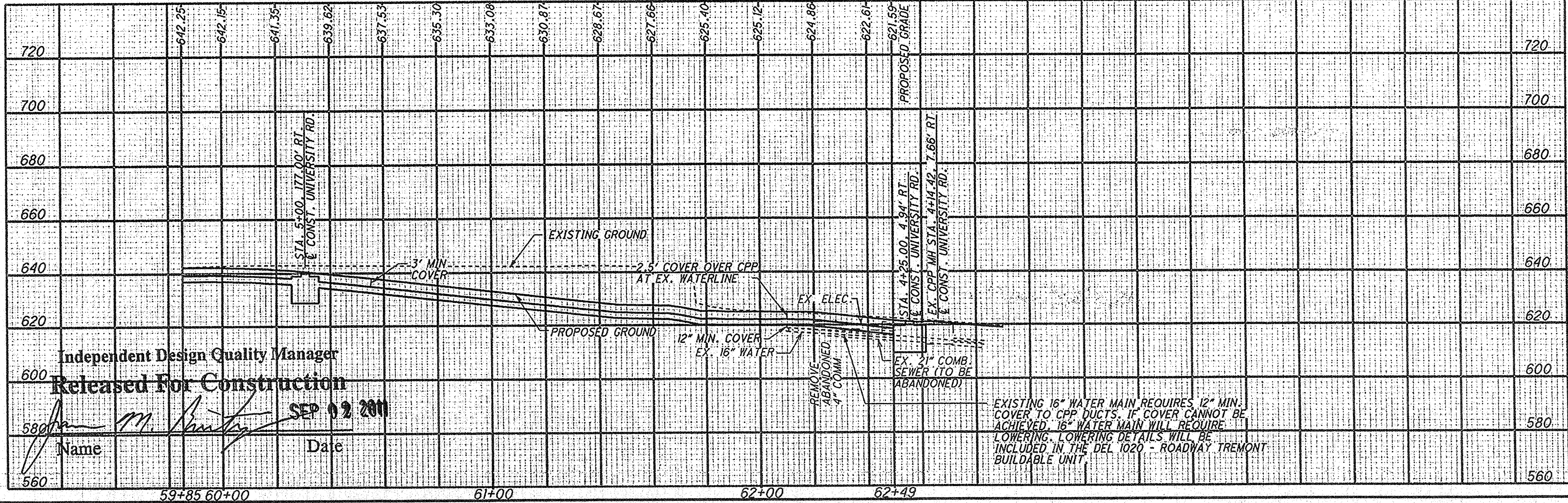
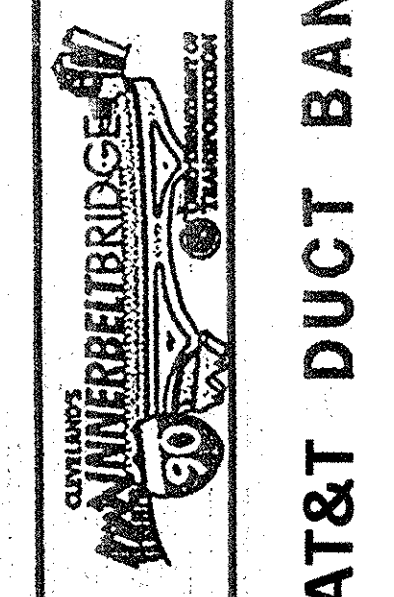


NOTES: SEE DWG. NOS. SP-001 TO SP-006 IN SURVEY CONTROL FOR ALIGNMENT INFORMATION. SEE ROADWAY TREMONT (BU 1020) FOR PROPOSED ROADWAY WORK.



NO.	REVISIONS	DATE
1	FINAL SUBMITTAL APPROVED FOR CONSTRUCTION	08/30/2011 09/02/2011

DESIGN AGENCY
WALSH HNTB
WALSH CONSTRUCTION



CPP
RELOCATIONS

AT&T DUCT BANK

CUY-90-14.90

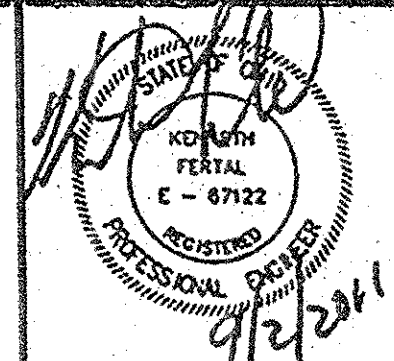
DRG. NO. UT-303

DESIGNED: EJK
CHECKED: KF

6/21

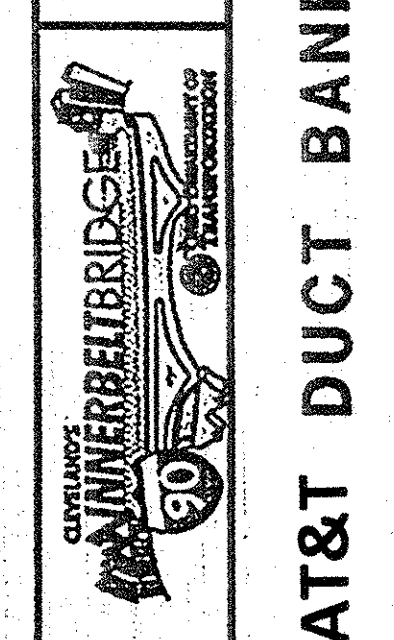
9/2/2011 11:09:02 AM
Model: Sheet3
File: 49633-S-RD-PLN70.dgn

Independent Design Quality Manager
Released For Construction
SEP 02 2011
Name: M. [Signature]
Date: SEP 02 2011



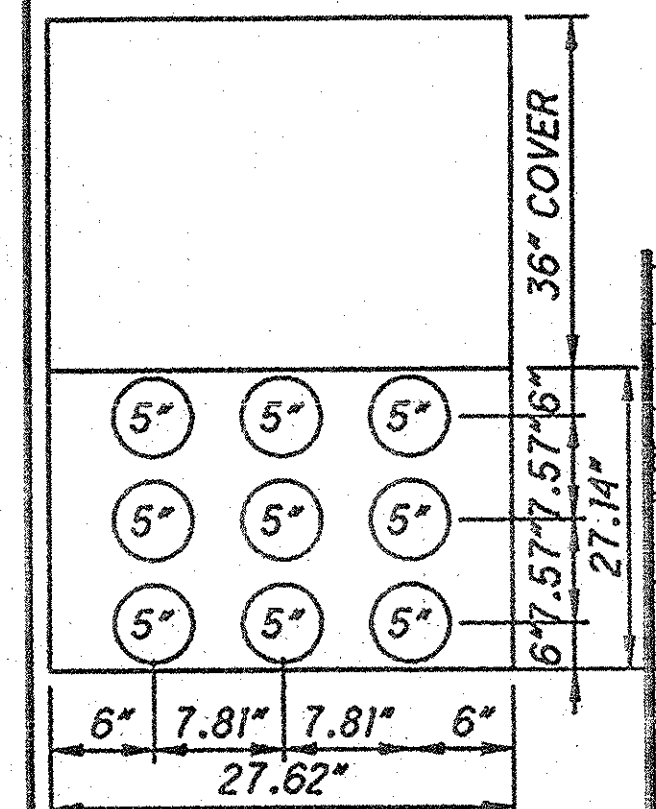
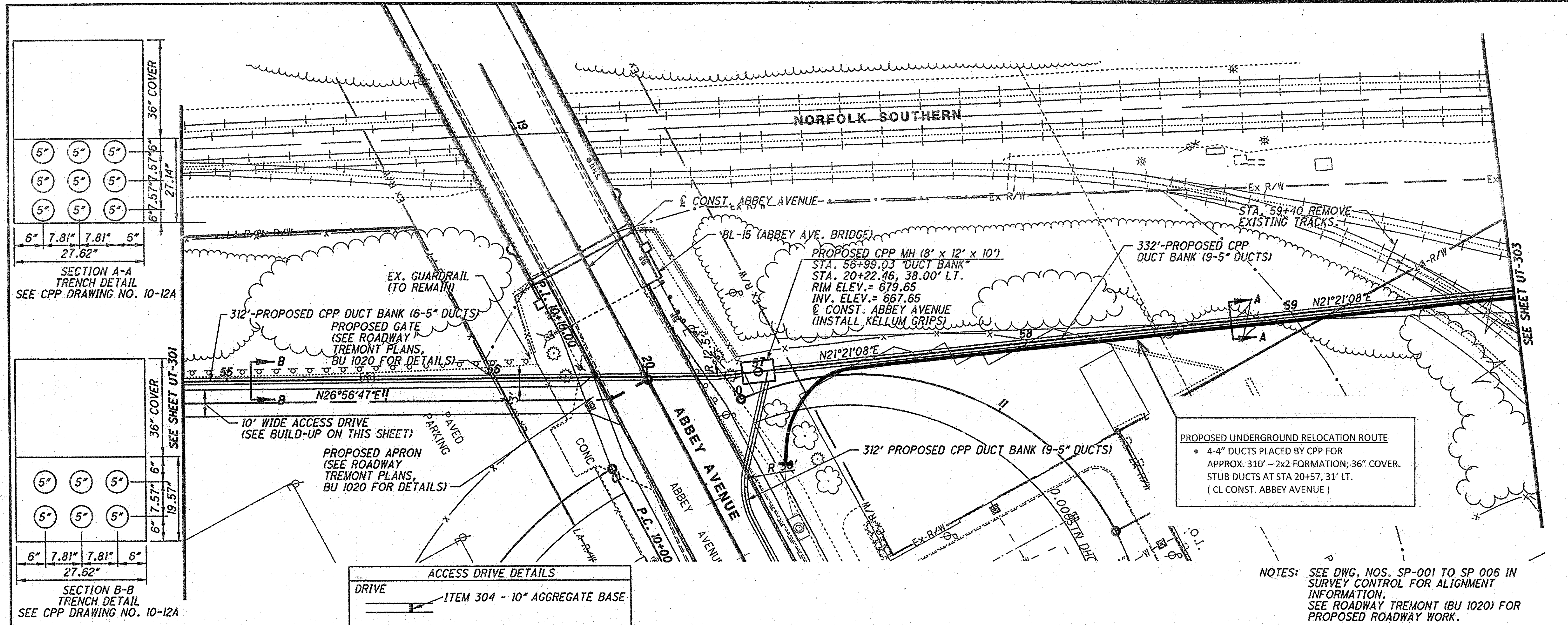
NO.	REVISIONS	DATE
1	FINAL SUBMITTAL APPROVED FOR CONSTRUCTION	09/30/2011 09/02/2011

DESIGN AGENCY
WILSH HNTB
WALSH CONSTRUCTION

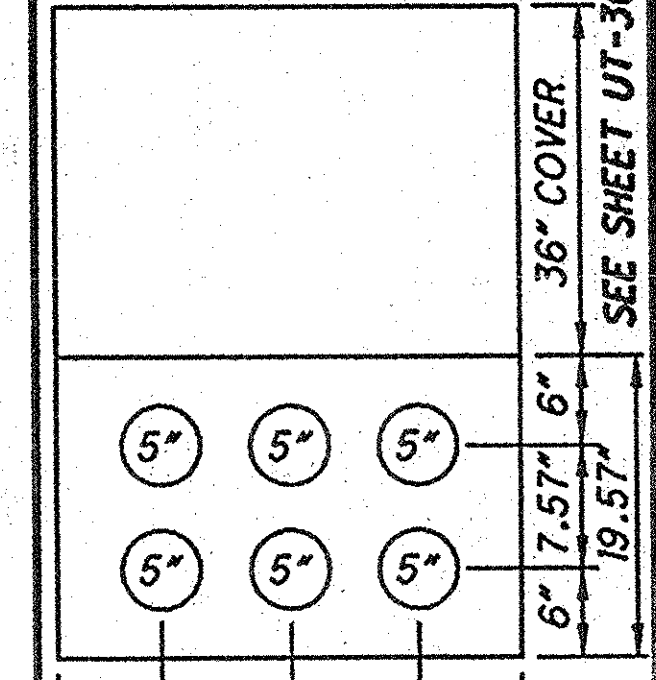


CPP
RELOCATIONS

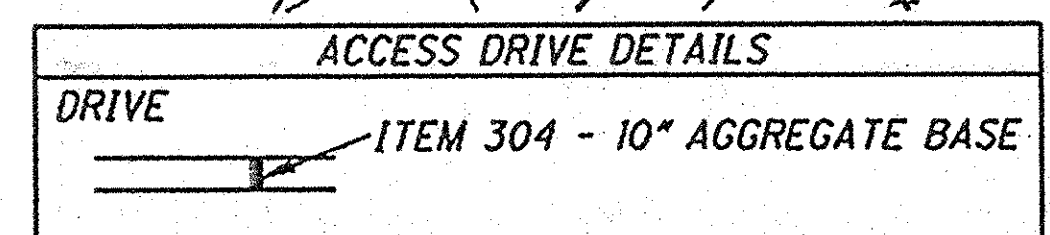
AT&T DUCT BANK
CUY-90-14.90
SCALE IN FEET
DESIGNED: EJK
CHECKED: KF
5
21



SECTION A-A
TRENCH DETAIL
SEE CPP DRAWING NO. 10-12A

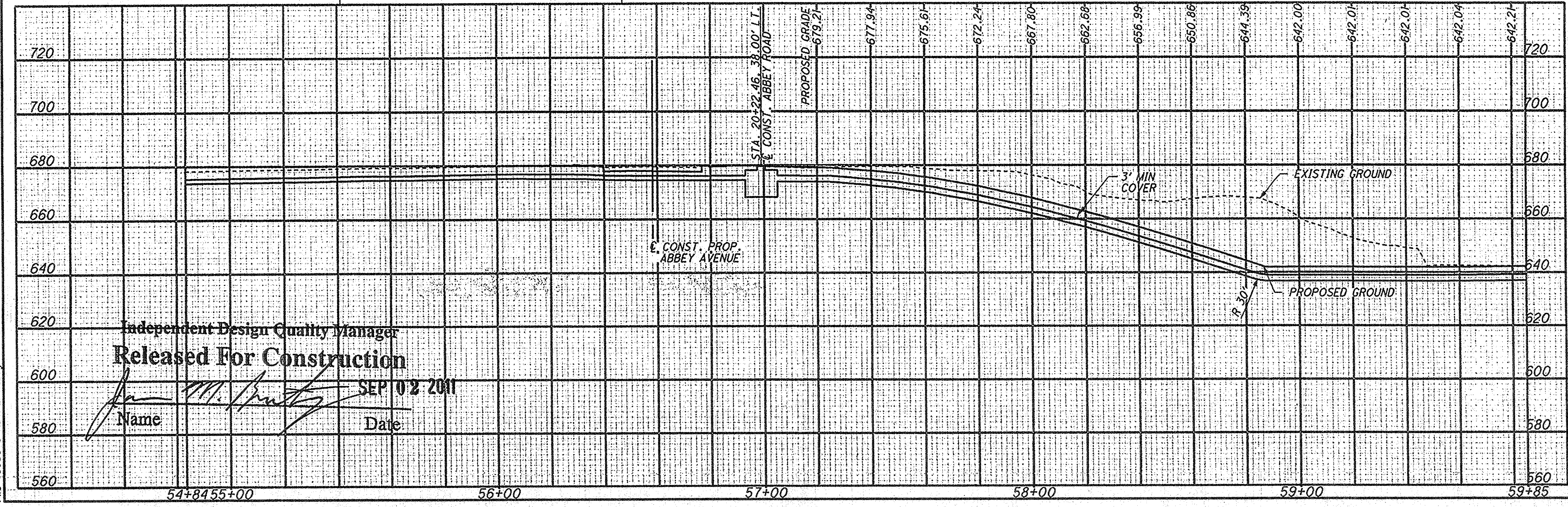


SECTION B-B
TRENCH DETAIL
SEE CPP DRAWING NO. 10-12A



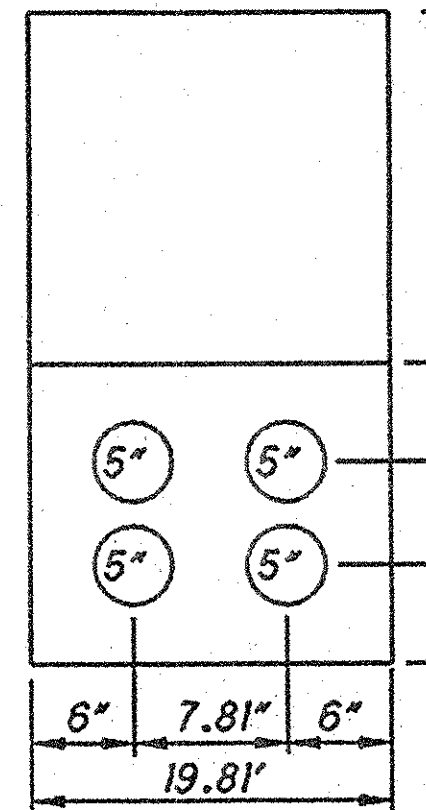
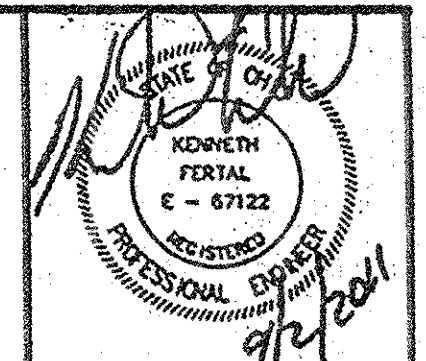
PROPOSED UNDERGROUND RELOCATION ROUTE
 • 4-4\"/>

NOTES: SEE DWG. NOS. SP-001 TO SP-006 IN SURVEY CONTROL FOR ALIGNMENT INFORMATION. SEE ROADWAY TREMONT (BU 1020) FOR PROPOSED ROADWAY WORK.

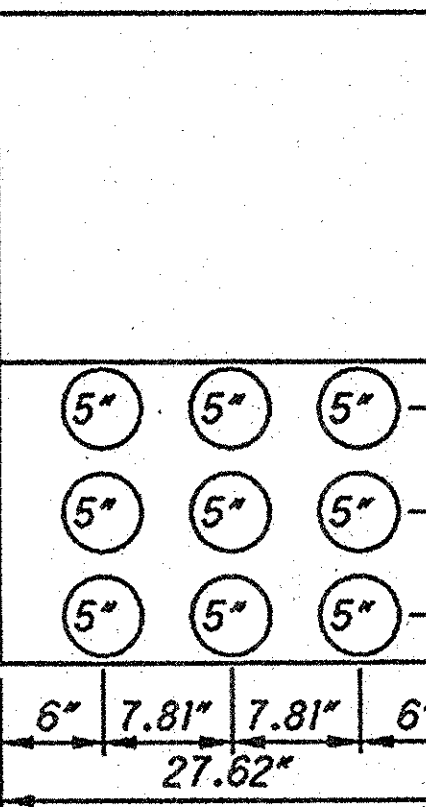


Independent Design Quality Manager
Released For Construction
 Name: *[Signature]*
 Date: SEP 02 2011

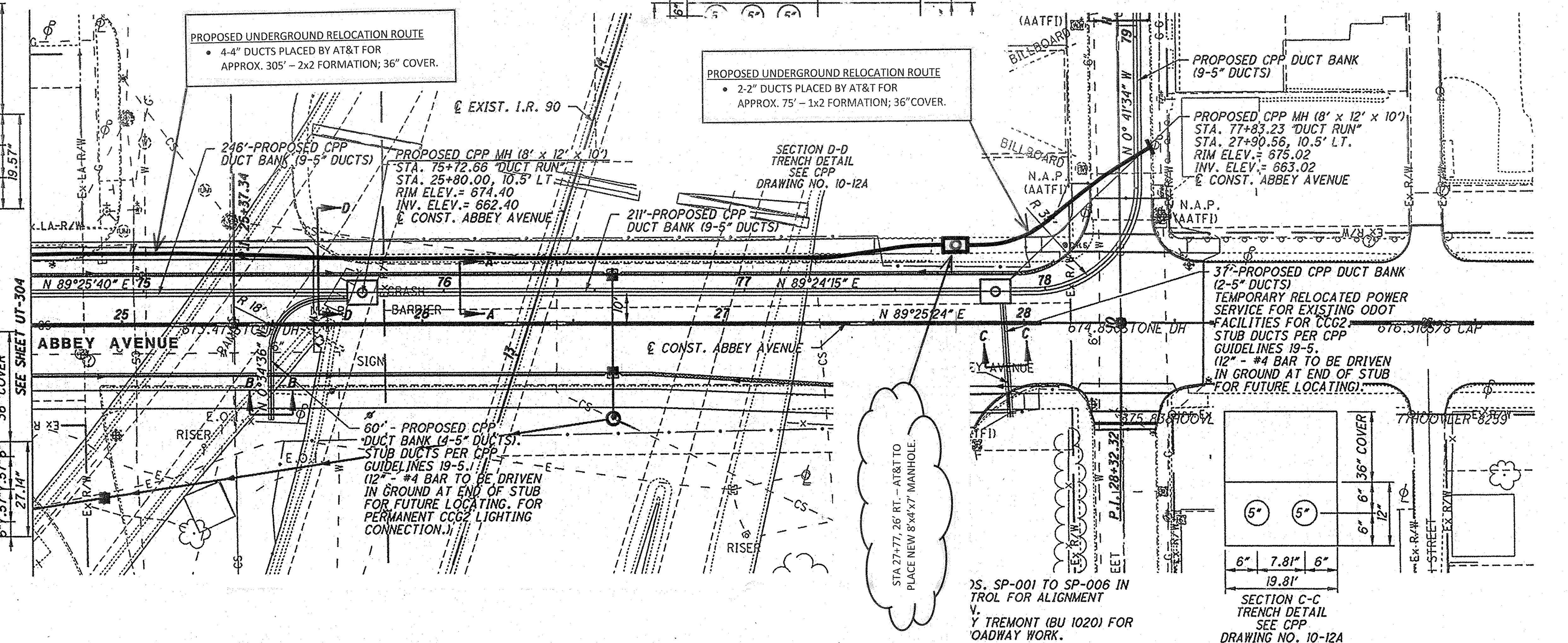
9/1/2011 4:24:58 PM
 Model: Sheet12
 File: 49633-S-RD-PLN70.dgn



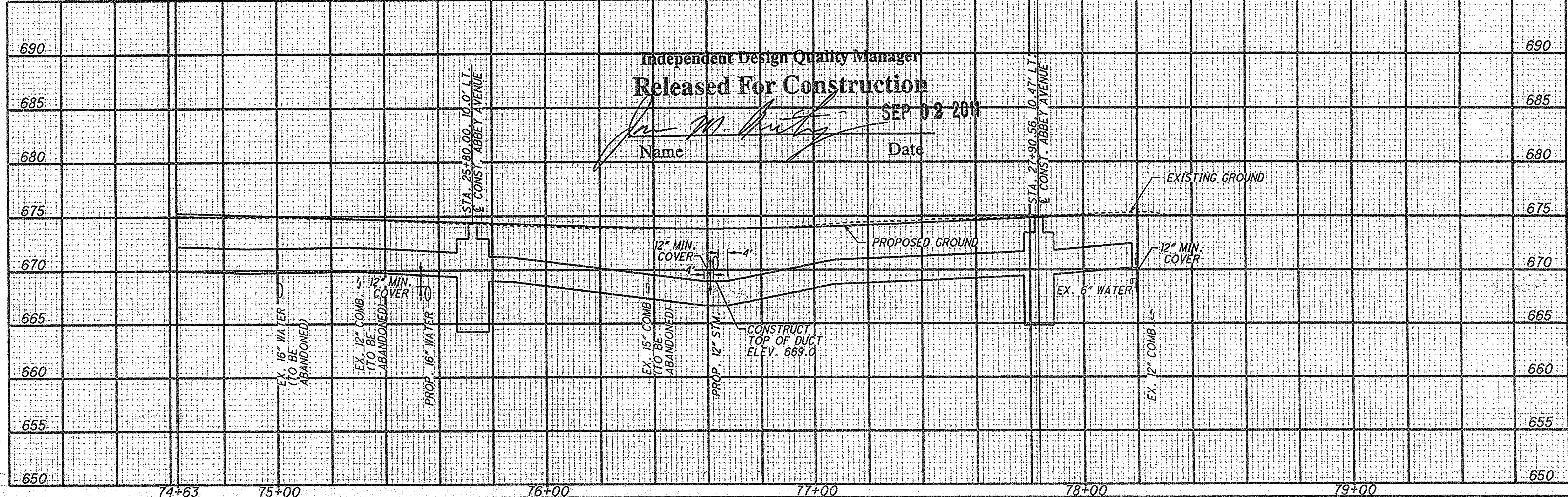
SECTION B-B
TRENCH DETAIL
SEE CPP
DRAWING NO. 10-12A



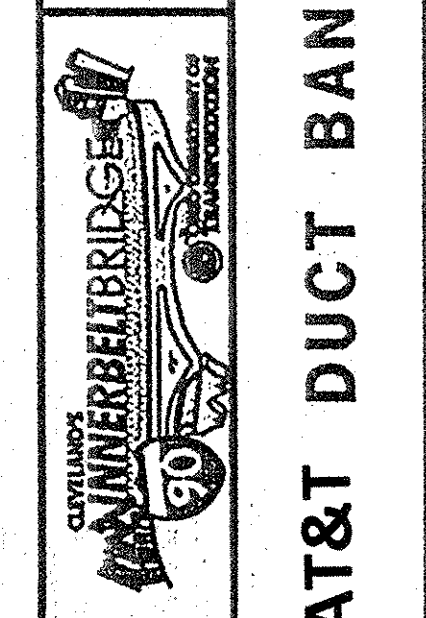
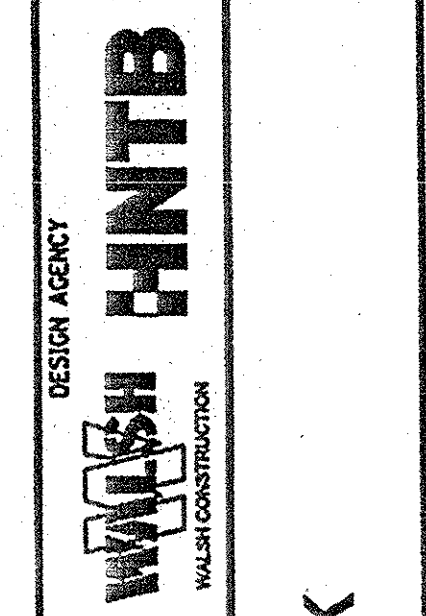
SECTION A-A
TRENCH DETAIL
SEE CPP
DRAWING NO. 10-12A



Independent Design Quality Manager
Released For Construction
Jan M. [Signature]
Name _____ Date **SEP 02 2011**



NO.	REVISIONS	DATE
1	FINAL SUBMITTAL APPROVED FOR CONSTRUCTION	03/29/2011
2		09/02/2011



CPP
RELOCATIONS

AT&T DUCT BANK

CUY-90-14.90

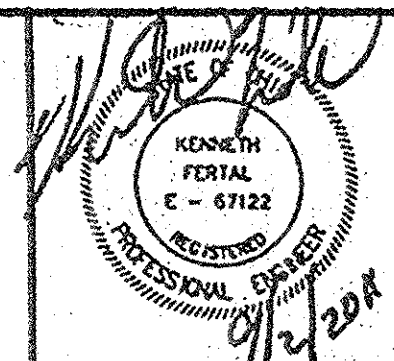
DESIGNED: EJK
CHECKED: KF

HORIZONTAL SCALE: 1" = 40' FEET

DATE: 09/02/2011
DRAWING NO.: UT-305

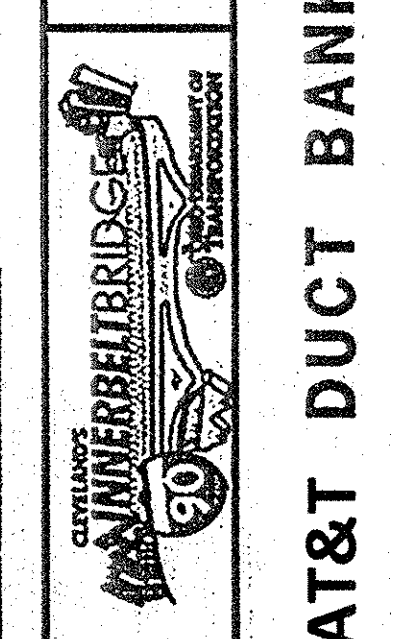
8/21

9/1/2011 4:25:05 PM
Model: Sheet15
File: 49633-S-RD-PLN70.dgn



NO.	REVISIONS	DATE
1	FINAL SUBMITTAL APPROVED FOR CONSTRUCTION	09/30/2011
2		09/02/2011

DESIGN AGENCY
WULSH HNTB
 WULSH CONSTRUCTION



CPP RELOCATIONS

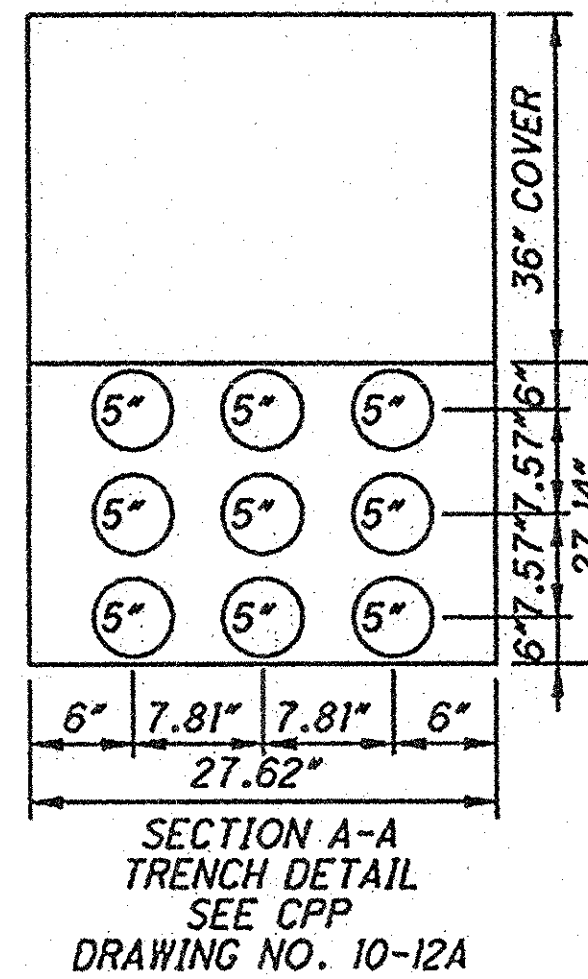
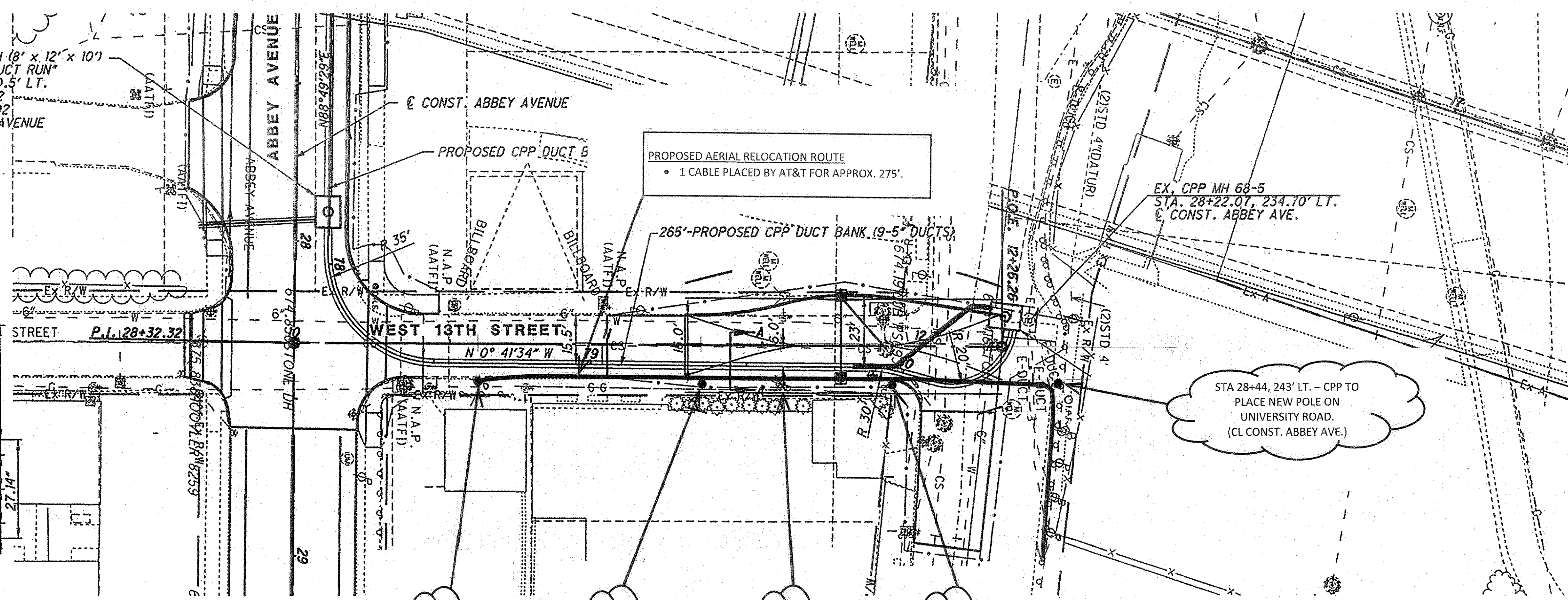
AT&T DUCT BANK

CUY-90-14.90

DESIGNED: EJK
 CHECKED: KF

DATE: 9/21/11

PROPOSED CPP MH (8' x 12' x 10')
 STA. 77+83.23 "DUCT RUN"
 STA. 27+90.56, 10.5' LT.
 RIM ELEV. = 675.02
 INV. ELEV. = 663.02
 CL CONST. ABBEY AVENUE



- STA 10+59, 12' RT. - AT&T TO REPLACE POLE AT EXISTING LOCATION ON W.13TH STREET.
- STA 11+30, 12' RT. - AT&T TO PLACE NEW POLE ON W.13TH STREET.
- STA 11+56, 12' RT. - AT&T TO REMOVE POLE AT EXISTING LOCATION ON W.13TH STREET.
- STA 11+90, 12' RT. - AT&T TO PLACE NEW POLE ON W.13TH STREET.

690	Independent Design Quality Manager										690
685	Released For Construction										685
680	Name: <i>Jan M. Prater</i> Date: SEP 02 2011										680
675	EXISTING GROUND.										675
670	2" MIN. COVER										670
665	PROP. 12" STM.										665
660	EX. 4" GAS COMB. (TO BE ABANDONED)										660
655	EX. 6" WATER COMB. (TO BE ABANDONED)										655
650	EX. 12" COMB. (TO BE ABANDONED)										650